

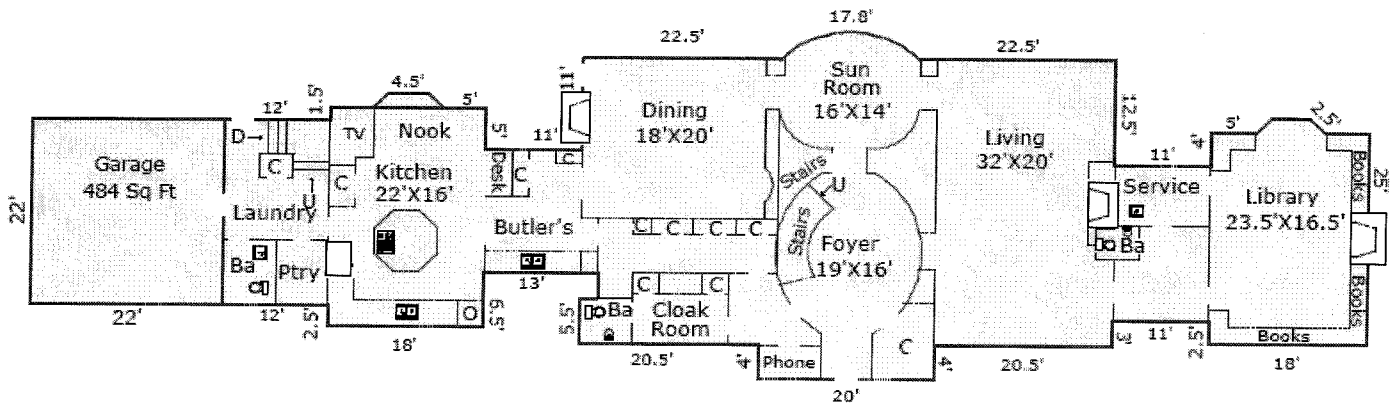
# "Room Service"

Prepared For M. J. Steen

A floor plan sketch by Williams Associates, Real Estate Appraisers, Inc.

(503) 644-7725 Fax (503) 644-6629

[www.appraiserwilliams.com](http://www.appraiserwilliams.com)



Main	3,751 Sq Ft
Total	10,685 Sq Ft

4700 SW Humphrey Boulevard, Portland, OR, 97221

02/09/2010

The dwelling has been drawn based on measurements taken in accordance with industry standards. The floor plan sketch is drawn with the assistance of APEX; a computer aided design (CAD) program. The square footage calculations generated by this program are assumed accurate, but not guaranteed.

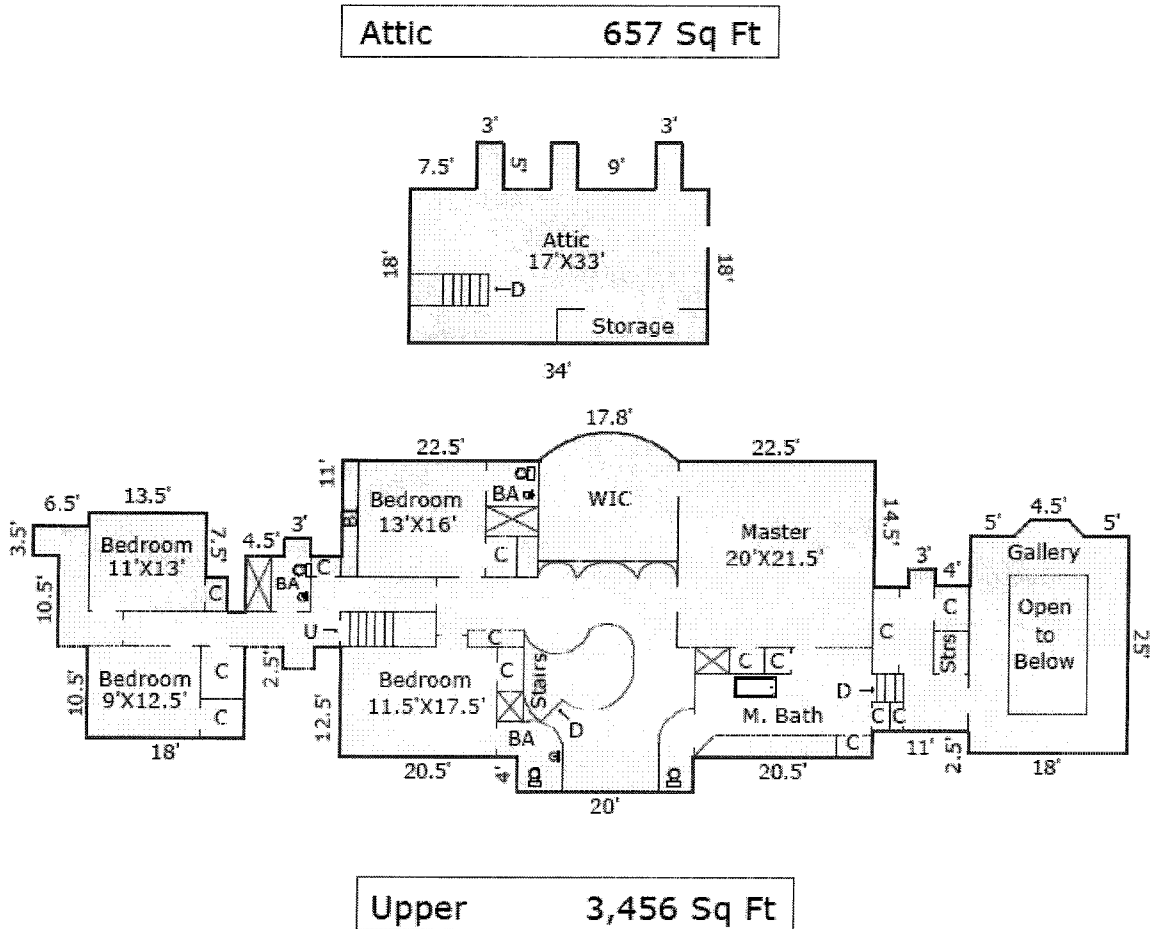
# "Room Service"

Prepared For M. J. Steen

A floor plan sketch by Williams Associates, Real Estate Appraisers, Inc.

(503) 644-7725 Fax (503) 644-6629

[www.appraiserwilliams.com](http://www.appraiserwilliams.com)



4700 SW Humphrey Boulevard, Portland, OR, 97221

02/09/2010

The dwelling has been drawn based on measurements taken in accordance with industry standards. The floor plan sketch is drawn with the assistance of APEX; a computer aided design (CAD) program. The square footage calculations generated by this program are assumed accurate, but not guaranteed.

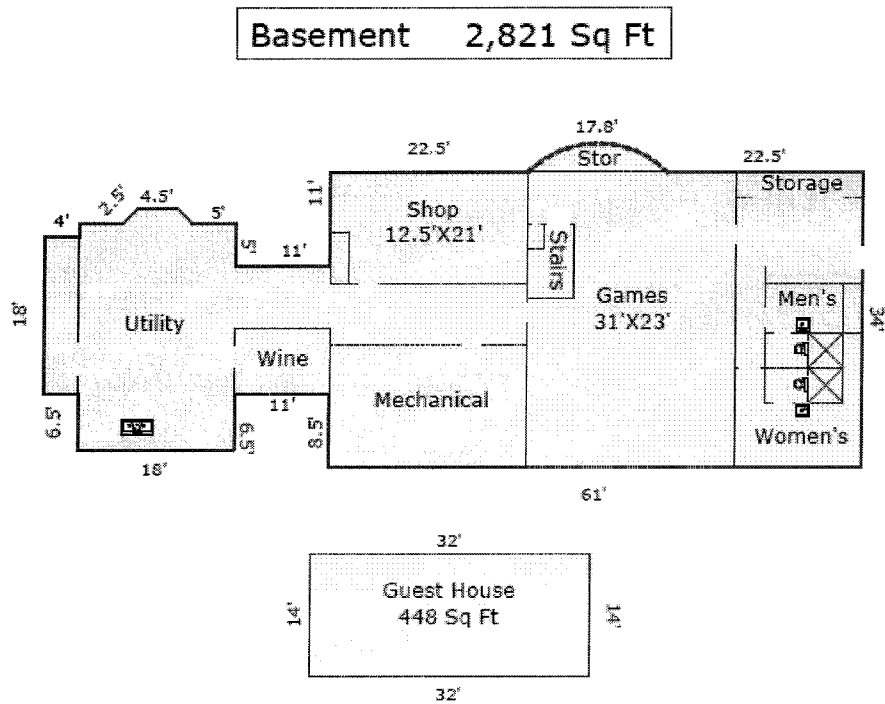
## "Room Service"

Prepared For M. J. Steen

A floor plan sketch by Williams Associates, Real Estate Appraisers, Inc.

(503) 644-7725 Fax (503) 644-6629

[www.appraiserwilliams.com](http://www.appraiserwilliams.com)



**4700 SW Humphrey Boulevard, Portland, OR, 97221**

02/09/2010

The dwelling has been drawn based on measurements taken in accordance with industry standards. The floor plan sketch is drawn with the assistance of APEX; a computer aided design (CAD) program. The square footage calculations generated by this program are assumed accurate, but not guaranteed.